

QUICK START GUIDE  
YOYOPower 4G Switch®

Status Indicators

Indicator Meaning	
	Power - OFF
	Power - ON
	Standby (on mobile network and waiting for commands)
	Processing SMS Command
	Searching for network
	Factory Reset 3 seconds

A3 Rev G (EN) © Copyright January 2021 Yoyomotion AB. All rights reserved.

YOYOPower Features

Easy set-up and control by SMS or APP (search for YOYOPower in the App Store<sup>SM</sup> or Google Play<sup>TM</sup>). Outlet ON/OFF button on side of unit plus ability to switch by phone call from Master or User.

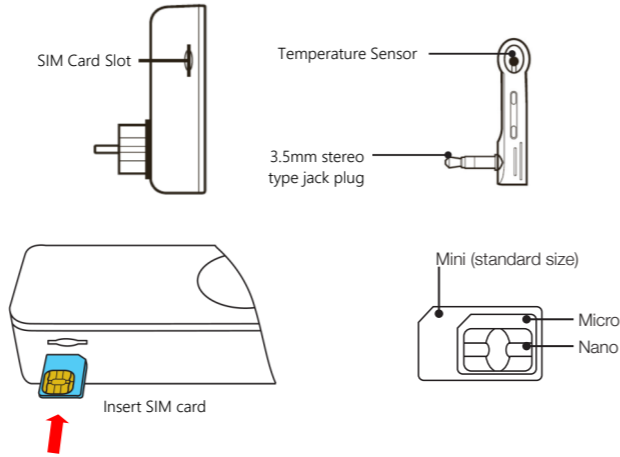
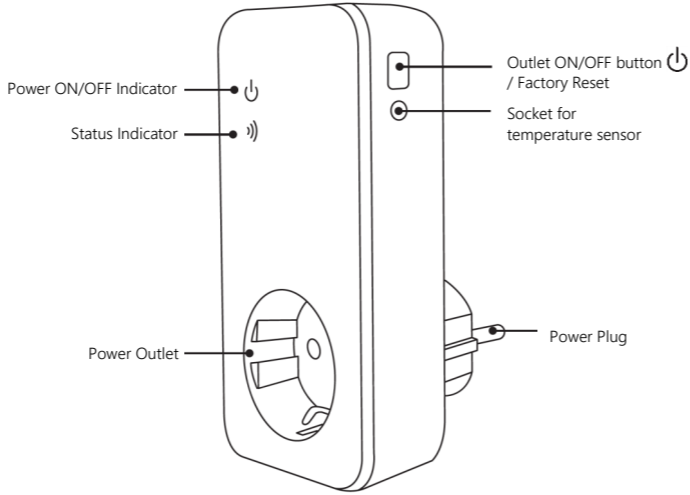
Control the outlet power by one of the three automatic control modes: Schedule (time of day and day of week), Delay Timer (1-720 minutes) or Temperature (thermostat).

Get current temperature. Set an SMS alert if the temperature goes outside a given range. Requires temperature sensor (supplied) to be plugged in.

SMS status notifications including power loss, power restored and low mobile signal. Notification when outlet switched ON or OFF manually or by one of the automatic control modes.

Master user sets up devices and has full control. Up to 4 additional users can switch outlets ON or OFF and get status using SMS or APP. When notifications to Users is enabled, Users also receive certain notification messages - see Complete Command List - NOTIFICATIONS

Get to know YOYOPower



Step 1: Prepare YOYOPower

- Plug in the temperature sensor to the socket on the side of YOYOPower, if required. Use a standard 3.5mm stereo audio extension cable if you wish to locate the sensor away from YOYOPower.
- Insert a SIM card into the Unit. YOYOPower uses a standard size SIM (Mini). To insert the SIM Card:
  - Hold the SIM card with the gold contacts facing upwards, as shown.
  - Insert the SIM gently until you feel a spring pressing back.
  - Insert a little further and the SIM clicks in to place.

To remove the SIM Card:

- Gently press the SIM card with your fingernail until you hear a click.
- The spring in the slot ejects the SIM a few millimetres.
- Remove the SIM from the slot.

**Note:** The SIM PIN must be disabled. Use a mobile phone to check and, if necessary, turn off SIM Lock.

**Note:** Check that the SIM card has credit.

**Warning:** Always be sure to unplug YOYOPower and wait 2 minutes before inserting or removing the SIM card. Do not touch the gold contacts of the SIM Card.

Step 2: Set up YOYOPower

- Plug YOYOPower in to an outlet.
- The status indicator flashes for approximately 60 seconds then changes to slow fade (Standby) indicate that the mobile network has been found.
- Register your mobile phone to be the Master that controls YOYOPower:
  - Install YOYOPower from the App Store<sup>SM</sup> or Google Play<sup>TM</sup>
  - Open the YOYOPower app, tap **+ add Main Unit** and enter the location (e.g. Garage), the name of the controlled appliance (e.g. heater) and the Main Unit's mobile number.  
*or*
  - Send an SMS with text **#00#** to the Unit's mobile number.
- Wait for the welcome SMS with the default password 1234 (Don't forget to change it!)
- Change language to English by sending **#39#0#**
- Test by switching the outlet ON and OFF according to the instructions below.
- Plug in the appliance to be controlled via YOYOPower.

YOYOPower Unit is now operational

Switch outlet ON and OFF

- Press the ON/OFF button for one second. The outlet switches on or off when you release the button.  
*or*
- In the YOYOPower app, tap or next to the required unit's name.  
*or*
- (Main Unit) Make a phone call to the mobile number of the SIM card.  
*or*
- Send **#01#** to switch ON the power and **#02#** to switch it OFF.

**Note:** Switching ON or OFF manually deactivates automatic control.

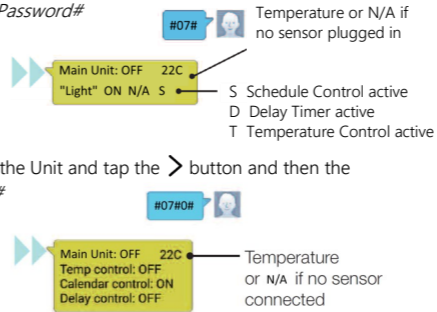
Change Password

The password is exactly four numbers, default 1234. To change it:

- Go to **Advanced Settings** for the Main Unit and tap **Change password**  
*or*
- Send **#04#OldPassword#NewPassword#**

Check Status

- In the YOYOPower app, select the Unit and tap the button and then the **Status** button, or send: **#07#0#**
- Wait for the status SMS.



Automatic Control

The YOYOPower outlet can be set to switch ON and OFF automatically according to:

- Schedule:** a pre-set schedule based on day of the week and time of day
- Delay:** a simple delay of 1 to 720 minutes before the outlet switches ON or OFF
- Temperature:** operate as a thermostat for heating or cooling.

**Note:** Only one of the above modes may be in operation at any time. For example, enabling Delay control disables Schedule control. Using the Manual ON/OFF button also disables automatic control.

Schedule Control

The schedule is active on selected day(s) of the week and switches ON and OFF at the given time of day.

To set using the YOYOPower app:

- Tap against the unit you want to schedule.
- Tap **Schedule Control** .
- Select day(s) to be active.
- Enter ON and OFF times in 24-hour format.
- Tap **OK**. An SMS confirms the schedule is enabled.
- Enable or disable the schedule by tapping or .

To set up by SMS:

- To set up the schedule, send:
  - #20#0#Day#OnTime#OffTime#**
- An SMS confirms the schedule is enabled.

To disable schedule control by SMS, send:

- #19#0#0#**

To enable schedule control by SMS, send:

- #19#0#1#**

Notes

- OnTime and OffTime use the 24-hour clock e.g. 0045,2130.
- The setting is saved. To change it, repeat the set-up procedure and the old setting is overwritten.
- If OnTime is later than OffTime, the power stays on until the next day.

Delay Control

Delay control switches the outlet ON or OFF 1 to 720 minutes after the delay is initiated.

To set using the YOYOPower app:

- Tap against the unit you want to configure.
- Tap **Delay Control** .
- Enter 1 to 720 minutes for the delay timer.
- Select if the power to the outlet shall be switched ON or OFF when the delay timer expires.
- Tap **OK**

**Note:** Tap the **STOP** button to cancel the delay control.

To switch ON the outlet after 1-720 minutes by SMS, send:

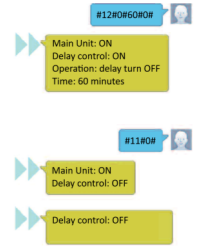
- #12#0#minutes#1#**

To switch OFF the outlet after 1-720 minutes, by SMS, send:

- #12#0#minutes#0#**

To stop the Delay Timer, by SMS, send:

- #11#0#**



Notes

- The outlet is set to the correct state when the Delay Timer starts. For example, if the outlet is ON and a *switch ON after 60 minutes delay* is initiated, the outlet is first switched off.
- If the Delay Timer is stopped, the outlet state (on or off) is not changed.

Temperature Control

Temperature control provides a thermostat feature to control a heater or cooling equipment. The standard range is -10°C to +50°C. An optional accessory sensor is available with wider range -50°C to +100°C.

To set using the YOYOPower app:

- Tap against the unit you want to schedule.
- Tap **Temp Control** .
- Enter the required temperature range.
- Select **warming mode** to control a heater or **cooling mode** to control a chiller.
- Tap **OK**. An SMS confirms the temperature control is enabled.
- Enable or disable the temperature control by tapping or .

To set up by SMS:

- To set up temperature control, send:
  - #24#0#Mode#LowTemp#HighTemp#**
- An SMS confirms the temperature control is enabled.

To disable temperature control by SMS, send:

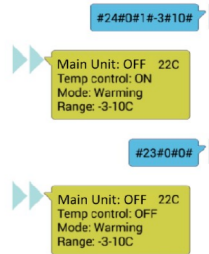
- #23#0#0#**

To enable temperature control by SMS, send:

- #23#0#1#**

Notes on Temperature Control

- Mode 1 (warming) switches ON the outlet when temperature is lower than Low-Temp and switches OFF when higher than HighTemp.
- Mode 2 (cooling) switches ON the outlet when temperature is higher than HighTemp and OFF when temperature falls below LowTemp.
- The Temperature Sensor must be connected to YOYOPower.
- The setting is saved. To change it, repeat the set-up procedure and the old setting is overwritten.



### Temperature Alert

YOYOPower alerts by SMS if the temperature is outside a given range, configurable between -10°C and +50°C. Temperature alerts are always sent, irrespective of sensor alarm on or off setting.

#### To set using the YOYOPower app:

1. Tap against the unit you want to schedule.
2. Tap **Temp Alert** .
3. Enter the required temperature range.
4. Tap **OK**. An SMS confirms the temperature alert is enabled.
5. Enable or disable the temperature alert by tapping or .

#### To set up by SMS:

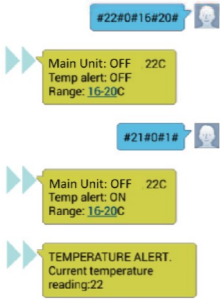
1. To set up the temperature alert, send:
  - *#22#0#LowTemp#HighTemp#*
2. An SMS confirms the temperature alert is enabled.

#### To disable temperature alert by SMS, send:

- *#21#0#0#*

#### To enable temperature alert by SMS, send:

- *#21#0#1#*



### Notification Messages

YOYOPower sends SMS notifications of various other situations. You can set which ones to receive in the app and by SMS – see Complete Command List - NOTIFICATIONS

#### OutletOn/Off

By default, YOYOPower sends an SMS notification to Master and Users when an outlet is switched ON or OFF via the Manual button.

#### ACPowerloss/return

YOYOPower Unit sends an SMS notification if the AC power is lost and when it returns.

#### Weakmobilenetworksignal

YOYOPower Unit attempts to send an SMS to warn you that the mobile network signal is weak. (The signal must still be strong enough to send the SMS, so the feature cannot notify of lost network or very low strength).

### Master and Users

The Master is the mobile phone that first commands YOYOPower Main Unit using the app or by sending command *#00#*. The Master can change settings and has full control over YOYOPower.

The Master can add up to 4 Users who can switch the outlet ON and off, get status information and, if enabled, some notifications. Users may interact by SMS or use the YOYOPower app.

**Note:** Users will receive error messages when attempting to change settings.

#### To setup and manage users:

- In the app, tap against the YOYOPower unit to configure, then tap Settings and then Users .

or

- Use the SMS commands in the table Complete Command List - MASTER & USER MANAGEMENT.

**Note:** International mobile number format (e.g. +467xxxx) recommended

### Complete Command List

Key:

- **U** means that a User may access the command. (Master may access all commands)
- **ON** or **OFF** in capitals shows the default setting.

#### SWITCH OUTLET ON AND OFF

Switch ON outlet	#01#0#	U
Switch OFF outlet	#02#0#	U
Switch ON	#01#	
Switch OFF	#02#	

#### GET STATUS

Status summary	#07#	U
Detailed status	#07#0#	U
Mobile network information	#27#	

#### SCHEDULE CONTROL

Define schedule	#20#0#Day#OnTime#OffTime#	
Check schedule	#33#	U
Schedule Control - OFF	#19#0#0#	
Schedule Control - on	#19#0#1#	

Day: 0 - Every day; 1 - Monday; 2 - Tuesday; 3 - Wednesday; 4 - Thursday; 5- Friday; 6 - Saturday; 7 - Sunday; 8 - Monday to Friday; 9 - Weekend (Saturday & Sunday)

OnTime & OffTime in 24 hour format e.g. 0030, 0830, 1200, 1730, 2230

#### DELAY CONTROL

Switch outlet ON after 1 to 720 minutes	#12#0#minutes#1#	
Switch outlet OFF after 1 to 720 minutes	#12#0#minutes#0#	
Check Delay Control	#34#	U
Stop Delay Control	#11#0#	

#### TEMPERATURE CONTROL

Set range and mode (heater control)	#24#0#1#LowTemp#HighTemp#	
Set range and mode (cooling control)	#24#0#2#LowTemp#HighTemp#	
Check range and mode	#32#	U
Temperature Control - OFF	#23#0#0#	
Temperature Control - on	#23#0#1#	

#### TEMPERATURE ALERT

Set temperature range	#22#0#LowTemp#HighTemp#	
Check current temperature and alert range	#35#0#	U
Temperature Alert - OFF	#21#0#0#	
Temperature Alert - on	#21#0#1#	

#### NOTIFICATIONS

SMS when Manual button  used - off	#03#0#
SMS when Manual button  used - ON (to Master & Users)	#03#1#
SMS when power is lost / returns - off	#05#0#
SMS when power is lost / returns - ON (to Master & Users)	#05#1#
SMS notifications to users - OFF	#16#0#
SMS notifications to users - on	#16#1#
SMS when mobile signal is weak - OFF	#27#0#
SMS when mobile signal is weak - on (to Master) (1)	#27#1#
SMS when Temperature Control enabled - off	#37#0#
SMS when Temperature Control enabled - ON (to Master)	#37#1#
SMS when Schedule Control enabled - off	#38#0#
SMS when Schedule Control enabled - ON (to Master)	#38#1#
SMS when outlet switched on or off by phone call (2G or 3G network) - OFF	#49#0#
SMS when outlet switched on or off by phone call (2G or 3G network) - on (2)	#49#1#

(1) There must be enough mobile signal for the SMS to be sent.

(2) Notification when outlet switched by APP, SMS or phone call is to the user sending the command only.

#### MASTER & USER MANAGEMENT

Set as Master (new / after factory reset)	#00#
Change Master number	#14#NewNumber#
Add user	#06#UserNumber#
List users	#06#
Delete user	#15#UserNumber#
Delete all users	#15#

International mobile number format (e.g. +467xxxx) recommended

#### OTHER COMMANDS

Phone call switches outlet on/off - off	#09#0#
Phone call switches outlet on/off - ON	#09#1#
Beep when Unit switched using  button - off	#13#0#
Beep when Unit switched using  button - ON	#13#1#
Reset Unit to default settings (factory reset)	#08#Password#
Change password (4 digits, default 1234)	#04#OldPassword#NewPassword#
SMS response language - english	#39#0#
SMS response language - SWEDISH	#39#1#

#### Factory Reset to default settings

- Press and hold the power button (for up to 20 seconds) until the status indicator stays on for 3 seconds.
- or
- Send SMS command *#08#Password#*

### Troubleshooting Guide

#### Status indicators are off / no response to commands

- Check that there is power at the outlet in to which YOYOPower is plugged
- Check that the SIM card is correctly inserted
- Factory Reset and reconfigure YOYOPower
- Contact your reseller for further support

#### Status indicator flashing quickly

- No SIM Card installed or not fully inserted - check the SIM card is correctly installed
- Put the SIM card in a mobile phone and test it

#### Status indicator flashing slowly

- GSM coverage too weak – try YOYOPower Unit in a different location
- PIN set on SIM card – place SIM in to a mobile phone and switch off SIM PIN
- Check SIM Card works in a mobile phone

#### Power button doesn't switch the outlet ON or off

- Hold the button for two seconds until you hear a beep - a short press is not enough
- Wait for YOYOPower Unit to find the mobile network

#### No SMS response from YOYOPower

- Check SIM card has credit
- Check your phone is registered as Master or User and is using a valid command
- Check SIM card has SMS service. Mobile data SIMs do usually not support SMS.

#### YOYOPower responds “Master number already registered”

- Another mobile number is the master. Ignore this if you are a User setting up theYOYOPower app.
- Ask the Master to send *#14#NewNumber#* to change the Master number
- Perform a Factory Reset and configure YOYOPower again.

#### Status indicator flashing slowly

- Interference from other radio devices nearby – move away from them

#### YOYOPower unexpectedly switches OFF or on

- Request a status report to check current status
- Request SMS notification when phone call switches outlet ON or OFF (send *#49#1#*)
- Disable the “phone call switches outlet ON or OFF” feature (send *#09#0#*)

### Important information

Please read this information before using your YOYOPower.

#### Power Store

- YOYOPower contains a small power store so that it can send a SMS when power is lost.
- The transmitter in YOYOPower remains active for a while after it has been unplugged.

#### Safety and Usage Guidelines

- Only insert a SIM card type Mini (standard size).
- Read the terms and conditions for your SIM card and mobile operator service.
- When inserting or removing the SIM card, do not touch the gold connectors.
- Treat your YOYOPower carefully; store it safely and do not drop or throw it.
- Do not expose your YOYOPower to dust, liquid, moisture or humidity; extreme high or low temperatures, naked flames, lit tobacco products or other heat sources.
- Do not use your YOYOPower in hospitals or near medical equipment.
- If you have personal medical devices such as a pacemaker, consult your physician and the manufacturer for advice.
- Do not use your YOYOPower in aircraft or in any place where use of radio transmitters is prohibited; where a potentially explosive atmosphere is present or in proximity to car airbags.
- Do not attempt to take your YOYOPower apart; there are no user-serviceable components inside the product.
- Do not allow children to play with your YOYOPower; small parts such as SIM cards could be detached and represent a choking hazard.
- For optimum performance do not cover your YOYOPower; position it with good access to the mobile signal.
- You should not rely on any SMS or phone call capability that your YOYOPower provides for **Disposal and Recycling** essential communications.
- Do not dispose of your YOYOPower with normal household waste.
- Dispose of your YOYOPower at an appropriate collection point for electronic equipment.